



THE STREET



RENDHAM VILLAGE NEWSLETTER

2021 Year of the Ox



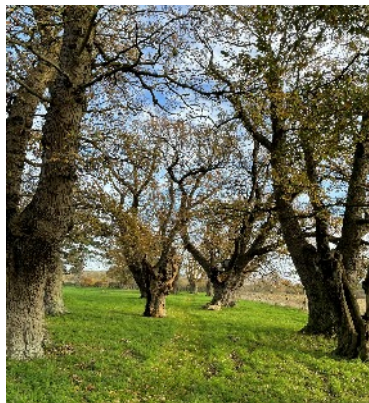
Read it in colour ONLINE at : <http://rendham.onesuffolk.net>

DECEMBER 2020 - JANUARY 2021

We wish all our
readers a Merry
Christmas and a
Happy New Year!



Goodbye to
2020



Photos: Helen Payne & David Robbie

Supported by Rendham Village Amenity Fund
Reports, editing, distribution by volunteers. Printers: Leiston Press

Editors: Helen Greenburgh & Judith Mellor

ST MICHAEL'S CHURCH RENDHAM CHURCHWARDENS' REPORT

As we were unable to hold services in church on 8th November, it was decided to hold an outdoor service for our six parishes at Badingham, where the War Memorial stands in an open space. Thanks to Denis Moore, who represented our church, and laid the wreath, which was afterwards brought back to to be placed on our own War Memorial. Thanks too to Lesley Bennion who read the names of the fallen with such beautiful clarity. We were delighted to take three large boxes of groceries to the Saxcess Food Bank, after having to cancel our normal Harvest Festival Service. Thanks again to all who contributed the food.



We are sorry that our Christmas Market on 5th December has had to be cancelled, but the wreaths which were so popular last year can still be ordered from Lesley on 663737.

Wishing you all a very Happy Christmas. *Charles Seely, Frances Hill*



CHRISTMAS SERVICES



At the time of writing, before the lifting of Lockdown#2, it seems unlikely that the Benefice will be able to hold any of the usual carol and crib services during Christmas. Limitations on numbers and the impossibility of singing in church rules them out.

Consequently, it is probable that a celebration of the Eucharist will take place as follows:

Christmas Eve:	4.00pm	Bruisyard
	6.00pm	Badingham
	8.00pm	Sweffling
Christmas Day:	8.00am	Rendham
	9.30am	Cransford
	11.00am	Dennington.



Sunday 27 Dec: 10.00am Benefice Eucharist at Cransford

All subject to change, keep eyes and ears open for updates.

The hope is that services can resume in January following the pattern of worship which has been in place since the end of the first lockdown.

These are:

Badingham & Sweffling 1st Sunday of the month
Cransford & Dennington 2nd Sunday of the month
Bruisyard & Rendham 3rd Sunday of the month
Benefice Service 4th Sunday of the month

So Rendham's January church service should be at 11am on 17 January



For Rendham parish matters: Rector: Rev Martin Percival revmepercival@gmail.com

Benefice website: www.upperaldebenefficewebsite.com

SWEFFLING has a very good new website <https://sweffling.life/>

BRUISYARD has also updated its website www.bruisyard.com

Rendham Neighbourhood Watch/Village Happenings

Contact Trev.salmon@btinternet.com or tel: 01728 664199 to add your name to his circulation list for Neighbourhood Watch & info about village events.





CHRISTMAS IN RENDHAM 2020



Unfortunately, due to the pandemic, we are unable to hold our Christmas Market this year, but you will still be able to order door wreaths, door paddles and grave wreaths.

They will cost roughly the same as last year, and all the proceeds will go to St. Michael's, our village church.



Grave wreaths - £10

Door wreaths - £12 - £15

Door paddles - £12 - £15



Please ring Lesley on 01728 663737 to place your order and to let her know whether you'd like to collect on either December 5th or 9th.

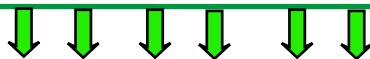


MACMILLAN NURSES DONATION APPEAL

(Updated report)

Many thanks to everyone who gave so generously to make the appeal such a success. The total amount raised was £960.00, and together with Gift Aid this totalled a huge £1,120.

Lynda Newson



**TIME TO GET PLANTING!
YOU CAN STILL GET SOME
BULBS IN!**

ALDE COMMUNITY COUNCIL ACC SPRING FLOWER SHOW APRIL 2021

The ACC is planning to hold a Spring Flower Show next April. This will restore the annual flower show after last spring's hiatus.

We have traditionally had a splendid display of blooms and arrangements in Sweffling Hut, and hope to repeat this, with an open air display as an alternative. The venue and date will be updated as the situation develops.

ALDE COMMUNITY COUNCIL YOUNG PERSONS OPPORTUNITY AWARDS



The ACC has for some time had a Young Person's Opportunity Award Scheme. This, like the Flower Show, is coming back to life. Two awards have recently been made, to assist the claimants with unforeseen charges that may have thwarted their opportunities in higher education.

This is a small discretionary grant, and a fuller description of the scheme will be given in a future edition.



**Have you ever thought about being
a First Responder?**

**It might be something you would
like to do.**

Contact Ken Goddard on 663609



SAVE THE DATE!

The 25th Rendham Fete didn't happen in 2020, so save the date for the 25th Rendham Fete on 3 July 2021 instead! Obviously the shape it takes will depend upon restrictions pertaining at the time, but let's be hopeful and keep fingers crossed. Offers of help, even at this impossibly early stage, gratefully received by pauljackson133@btinternet.com

RENDHAM PARISH COUNCIL NEWSLETTER: Parish Council November Meeting



Due to the lockdown it was decided to cancel the meeting in November but to move it to December 7th when hopefully the lockdown will be over. But some of the reports were sent in.



TREE WARDEN

What a glorious coloured Autumn we have been having! The wet weather and late sunshine allowing our trees to retain their leaves for longer. Walks through the village bring a myriad of green, orange, brown and red - too many hues to delineate with words. We have to get out and see them. It's still not too late, even given the recent gale force winds, as leaves are still aplenty and autumn fruits coming visually into their own as the former disappear. The Spindle trees still have their pink and orange fruits and Wild Rosehips litter the hedgerow. The Yew is in full red berry mode as is the Hawthorn and Rowan. Underfoot conkers and acorns abound along with the satisfying crunch of fallen dry leaves.

The Suffolk Tree Warden Network has been busy collecting seeds from trees in the County and is starting a project to grow trees from seed for a community tree nursery. The resultant saplings to be planted out in the wider community. The count so far is way above 6,000 tree seeds from 32 species. This project will ensure trees planted have a known local provenance. I'll try and keep you posted on the progress of this project.

So many trees to plant and much enthusiasm by both the populace and Government. As mentioned before the Government want to plant 30,000 hectares of trees per annum by 2025. Given this momentum I thought it would be a good idea to touch on the subject of how these trees are going to be planted. Not specifically but generally and this leads to the United Kingdom Forestry Standard (UKFS). The UKFS, first published in 1998, is now in its 4th incarnation. The UKFS consists of 41 legal requirements, 61 good practice statements and 312 guidelines! The standard defines the UK approach to sustainable forestry, biodiversity, water, soils, climate, people, history and landscape. Golly it covers a lot but then so will the trees. UKFS lays down the requirements for tree planting grants, felling licences and consent hoops required for planting any woodland over 2 hectares in any landscape and smaller ones in sensitive landscapes. This is to ensure we do not have a repeat of the monocultures of the past and to ensure trees planted are likely to survive to maturity in the chosen place planted. In other words Right Tree, Right Place, Right Reason. This is very important and should be borne in mind whenever a tree is planted. There will be trees planted for amenity and trees planted for commercial production; whether for wood products or biofuel. Some will have a trunk in both camps. There is a huge move to plant only Native trees and this is generating much argument as many of our much loved trees are naturalised not Native.



The landscape of native and naturalised trees on a November morning in Rendham, taken at the same time from a single spot, looking northwest and looking northeast



Naturalised trees in our area include the Purple Beech, Cedar, many Apples, Pears, Plums and Cherries, Horse Chestnut, Sweet Chestnut, Eucalyptus, Douglas Fir, Larch, Norway Maple, Monkey Puzzle, Turkey Oak, Holm Oak, Norway Spruce, White Poplar, Sycamore and Black Walnut.

By way of comparison, Native Trees include English Oak (pendunculate and sessile), Alder, Ash, Aspen, Common Beech, Birch, Blackthorn, Box, Bird Cherry, Buckthorn, Crab Apple, Dogwood, Elder, English Elm, Wych Elm, Guelder Rose, Hawthorn, Hazel, Holly, Hornbeam, Juniper, Lime, Field Maple, Scots Pine, Black Poplar, Rowan, Spindle, Whitebeam, Wild Service Tree, Bay Willow, Crack Willow and Yew.

So, you are now informed about the Native and naturalised tree debate and can make up your own mind. Some would even go as far as to say there is a good argument for planting some exotics but that's another story. Whatever you decide, plant the Right Tree in the Right Place for the Right Reason.

Tracy Gleeson

COUNTY COUNCILLOR STEPHEN BURROUGHS FULL REPORT ON THE VILLAGE WEBSITE

£228,000 for tree-planting, protecting hedgerows & verges across Suffolk.

New cycle parking installed thanks to Government's Emergency Active Travel Fund

Council leader hails action on the environment, roads & housing, despite COVID-19

Changes submitted for Sizewell C project to cut HGV construction traffic

Adopt East launches

Councils ready with Test and Trace Support Payment for most vulnerable.

Support to help businesses prevent spread of COVID-19



DISTRICT COUNCILLOR MAURICE COOK – FULL REPORT ON THE VILLAGE WEBSITE

Marina Customer Service Centre has reopened

New Chairman elected

New and ambitious 'Local Plan' approved

New service for council tenants to be launched

East Suffolk residents encouraged to safely shop local

People encouraged to stay safe on our coast

Claim against council dismissed

'Relevant representation' submitted for Sizewell C

Major funding boost to help tackle homelessness

High Street Heritage Action Zone programme begins

Rendlesham appeal dismissed



For information about the
Parish Council contact
Chair David Willett
or the Parish Clerk,
Chris Salmon on
rendhampc@gmail.com



Suffolk Steps, local historic
walks

[https://suffolkmuseums.org/
projects/suffolk-steps/](https://suffolkmuseums.org/projects/suffolk-steps/)

Photo, right: Rendham's
own local historic walk on
the bridle way past Carlton
Meres



Photo: David Robbie

Next Parish Council
meeting 7.30pm
RVH Monday 7 Dec ☆
& 11 Jan 2021 tbc

RENDHAM VILLAGE HALL – ALL OUR YESTERDAYS, AND TODAY

DISHCLOTHS AND PLATES!



Around this time in 1975, the Village Hall Management Committee discussed an apparent misuse of dishcloths by the Children's Playgroup who were regular users of the hall. The extent of the misuse is not detailed in the minutes of the meeting but it is reported to have caused some local friction. Attempts to resolve the issue were ongoing.



Following on from that horrendous episode is the startling case of 3 broken plates! A report was made that 3 plates had been broken as they fell out of the cupboard at a Saturday night party. The hirer was asked to make replacement. The minutes do not record whether the event had a Greek theme!

Also recorded is the fact that the Secretary had to personally appear at Saxmundham Court on 22nd September 1975 in connection with the formal application for the music licence. (Such authority to play music in the hall exists to this day).

TODAY AND COVID 19

In July the Government allowed village halls to prepare to re-open for restricted uses under stringent conditions designed to protect the public and limit the spread of COVID 19. The Management Committee embraced this opportunity and achieved full compliance to certify Rendham Village Hall as a COVID-secure building able to re-open early in September.

Any potential user is required to make a formal application to use the hall using the forms available on the Rendham Village website. Part of any application must include a detailed risk assessment detailing how the hirer proposes to manage their activity, or event, in order to ensure public safety with regard to the COVID restrictions e.g. control of numbers, track and trace, rule of 6 etc. As Rendham Village Hall does not employ staff, it is therefore incumbent on the hirer to accept the responsibilities involved during their period of use. The Management Committee cannot allow any activity to go ahead which is (a) not permitted under the COVID rules, and (b) where the hirer does not accept the responsibility. To do so could result in prosecution, litigation, forced closure and nullification of public liability insurance.

When not in lockdown, our regular Pilates groups use Rendham Village Hall with confidence and in full COVID compliance and safety.



Ongoing Building Improvements.



This year saw the installation of modern LED ceiling lighting followed by ceiling insulation in order to improve the environment for all users. Further considerations to upgrade heating will be made in 2021. The Management Committee has also approved the replacement of some plumbing fittings in order to improve hygiene.

Denis Moore, Chairman Rendham Village Hall Management Committee



OUR LOCAL FOOD BANKS

NEED OUR SUPPORT NOW MORE THAN EVER



Please can you spare some groceries and either drop them into the old Police Station in Saxmundham, or to the drop off point in Framlingham, or to Gina and Viv's on a Thursday and they'll drop them off.

There is a further option, and that is to donate to the food bank in Tesco (which is part of the Trussel Trust organisation, or go online to <https://www.trusselltrust.org/> and make a financial donation.

Thank you



JUNIPER BARN NEWS

So...are we a shop or are we a café?

Today, we're a shop, hopefully we'll be a café again in early December.

Whatever we are, we're open, serving takeaway hot drinks and snacks with a shop full of great Christmas goodies, gifts and treats for all, and we're supporting lots of local businesses too.

Keeping our staff and customers safe is our priority, following Government COVID-19 guidance.



All being well, we'll be hosting our traditional Christmas Brunch on Tuesday 22nd, Wed 23rd & Thurs 24th December from 9.00 – 2.30.

Booking essential, max 6 people, £17.50 per head.

Check out our website for the menu & book early!

Then we'll close until Tuesday, 5th January.

November has been a struggle for many small businesses, especially shops, but we hope that things will improve in December and that 2021 will bring good news to cheer us all up. We do thank all those who have supported us so loyally and we wish you a blessed Christmas and a hope-filled New Year.

Geoffrey and Katie Boulton

Open Tues – Sat 9.00 – 3.00

www.juniperbarnsuffolk.co.uk

01728 663773



SAXMUNDHAM LIBRARY NOW OPEN

The little temporary cabin is now open for you to return, collect and reserve items. Open Tuesday, Wednesday & Saturday, 10:00h – 14:00h. Same site, just a little further up Street Farm Road and opposite Fromus Vets. Spaces for 2 cars to park on the concrete.

Please follow Covid-secure measures as instructed on arrival. Space is extremely limited. If you desperately need something to read, we can find you something and reserve it for you. Complete one of our forms or email saxmundham.library@suffolklibraries.co.uk (we will need your name, contact number or email, library card number, how many books (up to 6) you would like reserving, type of author/s, genre/type of story/subject matter and we can notify you when they arrive.

You can still use other Suffolk Libraries to return and collect items. Opening and contact details here: <https://www.suffolklibraries.co.uk/visit/locations-and-times>



STUCK FOR A PRESENT IDEA?

How about a day of local Woodturning Tuition? 1:1

Fully qualified tuition with a lathe just for the student

All material and tools provided. Large heated workshop and at least two completed items to take home.

Attractive Gift Voucher available on receipt of the tuition fee of £150.00

Be warned it is a pursuit that can easily get out of hand.

Have a look at students' comments on the web-site

www.made@finewoodfurniture.co.uk

Sorry, no tuition during lockdown but there's Christmas and a whole year ahead for Birthdays or just a look at a new interest for yourself.

Phone Albert on 01728 663567



Albert Lain also sells small wooden items, if you are interested contact him for useful Christmas presents, or see some stock available in Juniper Barn



UPDATE: COVID-19 - ADVICE FROM SUFFOLK COUNTY COUNCIL

For more information and advice on Covid-19 please visit www.suffolk.gov.uk

SUFFOLK COUNTY COUNCIL ADVICE

The Suffolk County Council's COVID-19 page is www.suffolk.gov.uk/coronavirus-covid-19/
Find the latest information about testing in Suffolk, changes to local services and how to get help and guidance on schools, businesses and wellbeing. The site also provides information on how to keep healthy with the Healthy Suffolk website.

You must book a free test if you have any of these symptoms:

- a high temperature
- a new, continuous cough
- a loss or change to your sense of smell or taste

You and anyone you live with must stay at home until you get your result.

Anyone in your support bubble must also stay at home.

Government advises that only people with symptoms of Covid-19 should book a test.

If you have symptoms, get a free test as soon as possible.

You need to get the test done in the first 8 days of having symptoms.

You can book a free test by visiting the NHS website or call NHS 119.

There are three ways you can currently get tested in Suffolk:

- Request a Home Testing Kit, delivered to your home (only on days 1-7 of symptoms)
- Book an appointment at the Regional Testing Site at Copdock, near Ipswich
- Book an appointment at a Mobile Testing Unit, there are a number of sites across Suffolk

DOWNLOAD THE NHS COVID-19 APP TODAY

It's the fastest way of knowing when you're at risk from coronavirus. Search for NHS Covid-19 in the App Store or Google Play

FRAMLINGHAM SURGERY 01728 723627 ★

Dispensary: (01728) 723957

www.framlinghamsurgery.co.uk

SAXMUNDHAM SURGERY:

LAMBSALE MEADOW 01728 602022

www.saxmundhamhealth.nhs.uk/

Use the 111 or 119 coronavirus service if

- you feel you cannot cope with your symptoms at home

- your condition gets worse

- your symptoms do not get better after 7 days

Only call 111 or 119 if you cannot get help online

CONTACT YOUR DOCTORS ONLINE

Fill out a simple online form to get advice and treatment by the end of the next working day

If you are requesting a repeat prescription these can be sent to: dispensary.saxmundhamhealth@nhs.net

Please include your name, date of birth, address and details of all the medication that you are requesting.

Home, But Not Alone

Supporting vulnerable people in Suffolk

Coronavirus Emergency Phoneline

☎ 0800 876 6926



If you need urgent help

You can call the Home, But Not Alone phoneline if you live in Suffolk and need urgent help during the coronavirus (COVID-19) pandemic.

This emergency phoneline is for people who:

- do not have support available from friends, family or neighbours
 - are struggling for food, medicines or other essential supplies
 - are feeling lonely and isolated
- ★

DEADLINE FOR FEB/MAR 2021 'STREET': 17 JANUARY 2021

Email Helen Greenburgh: hpaygre@aol.com (07775 894146) AND Judith Mellor: rendhamstreet@gmail.com (hard copy can be sent to Gables Farm, Sandy Lane, Rendham)

PLEASE NOTE: IT IS ESSENTIAL TO EMAIL BOTH EDITORS

The Street welcomes items for publication, but we reserve the right to edit. **It is the responsibility of contributors to provide accurate details, PRIOR TO THE DEADLINE, about events.** We are normally limited to 8 pages so may not be able to publish everything we receive for each issue. **Priority is given to dated village events.** All items submitted for publication must carry a name & contact no / email address